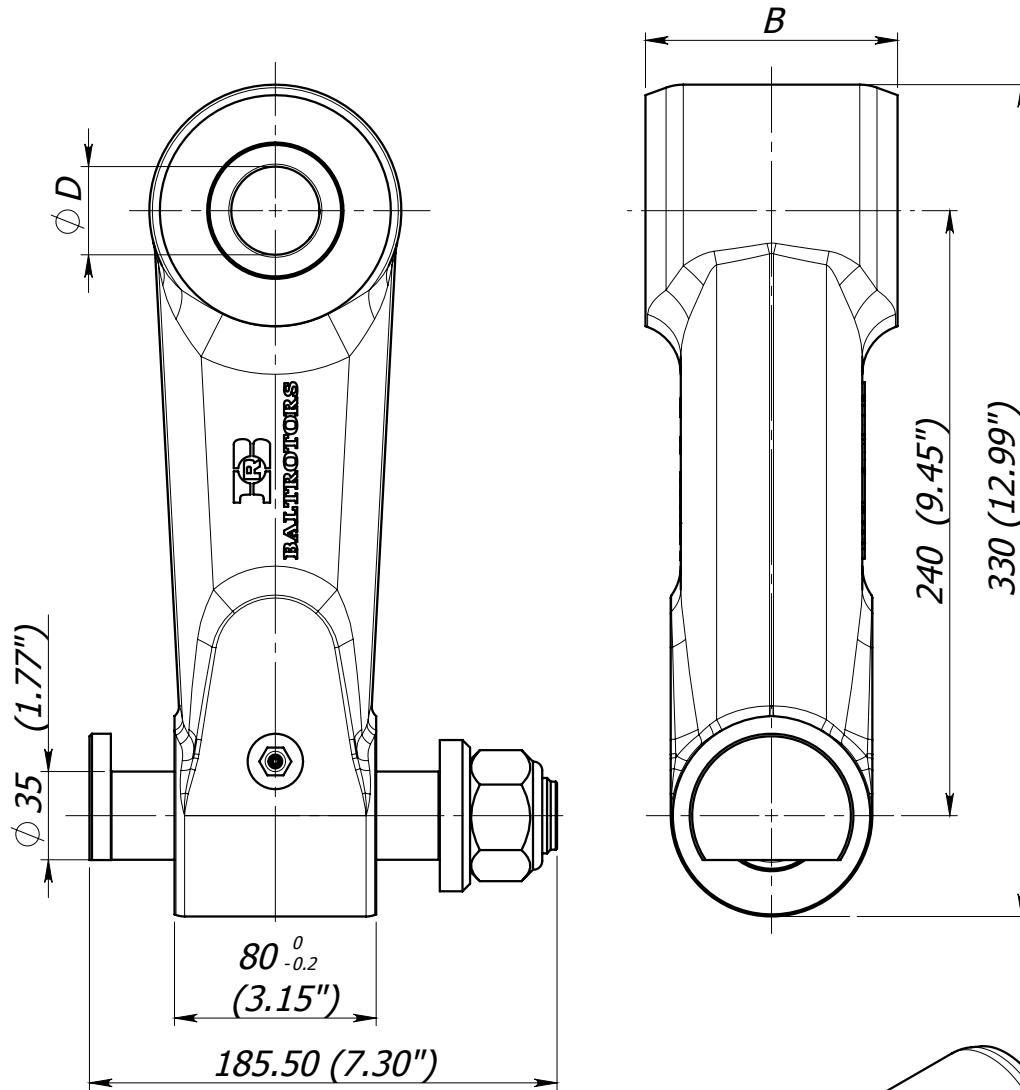
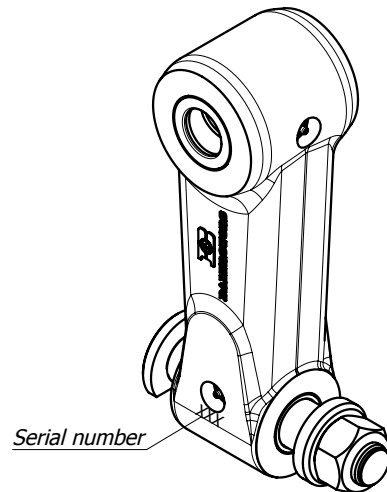


# LINK BR 2



Dimensions		
Crane nose pivot pin diameter $\phi D$ (mm)	Link width B (mm)	
		$80^{0}_{-0.2}$ (3.15")
45 (1.77")	BR 2/45	BR 2-100/45
40 (1.57")	BR 2/40	BR 2-100/40
35 (1.38")	BR 2/35	BR 2-100/35
30 (1.18")	BR 2/30	-



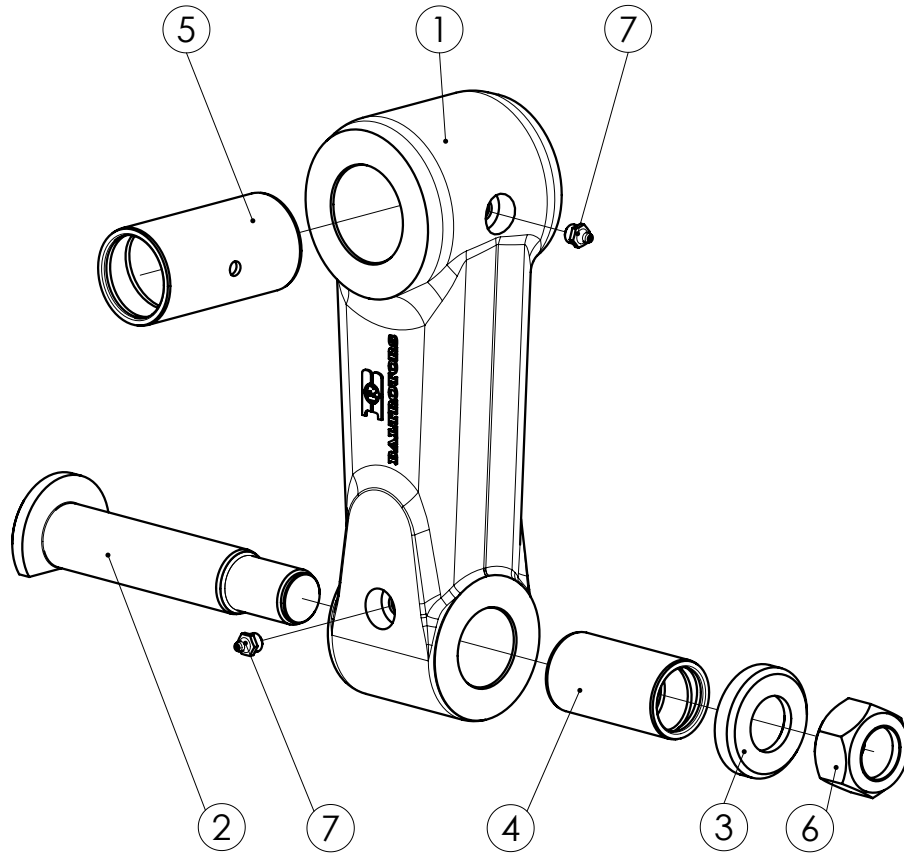
\* Pin locking nut is tightened with a torque of 120 Nm (89 lb ft)

\* Weight -  $16.5 \pm 1$  kg ( $36.37 \pm 2.20$  lb)

\* Fill grease Starplex EP 2, through lubricating nipple (pos. 7), until it will appear to the external surfaces. Greasing must be repeated after every 8 working hours of the link.

# LINK BR 2

## List of parts



Pos.	Part No.	Description	BR 2/45	BR 2/40	BR 2/35	BR 2/30	BR 2-100/45	BR 2-100/40	BR 2-100/35
1	BR 2.001-01	Link	1	1	1	1	-	-	-
	BR 2-100.001		-	-	-	-	1	1	1
2	BR 2.002	Pin	1	1	1	1	1	1	1
3	BR 2.003	Washer	1	1	1	1	1	1	1
4	BR 2.004-04	Steel bushing	1	1	1	1	1	1	1
5	BR 2.004-03	Steel bushing	1	-	-	-	-	-	-
	BR 2.004-02		-	1	-	-	-	-	-
	BR 2.004-01		-	-	1	-	-	-	-
	BR 2.004		-	-	-	1	-	-	-
	BR 3.004-02		-	-	-	-	1	-	-
	BR 3.004-01		-	-	-	-	-	1	-
	BR 3.004		-	-	-	-	-	1	
6	M30x1.5	Nut	1	1	1	1	1	1	1
7	1.2.C6	Grease nipple	2	2	2	2	2	2	2

2007.10.17. Sheet 2 of 2