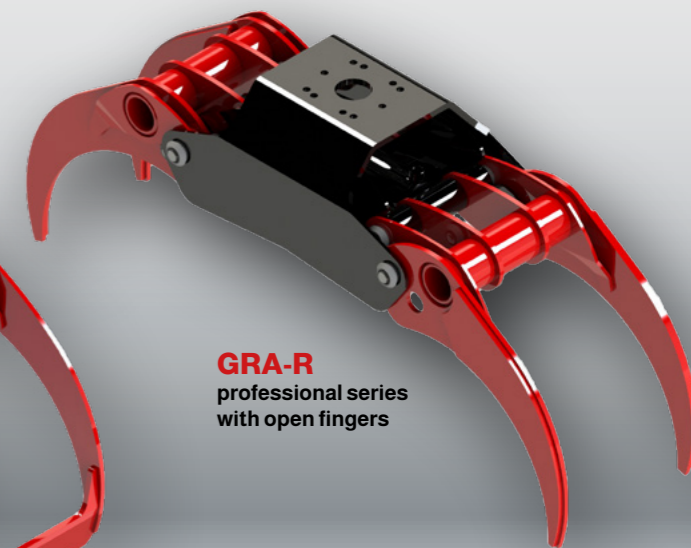
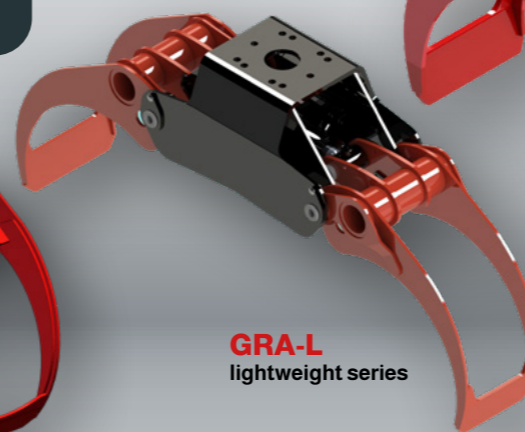
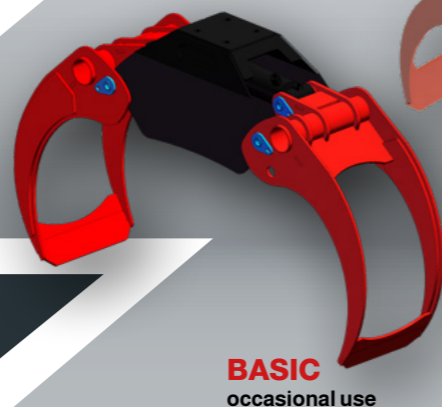




COMPATIBLE WITH

TRUCK CRANES EXCAVATORS



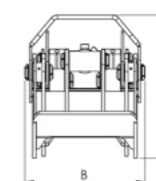
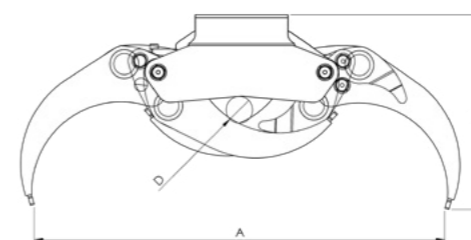
LOG GRABS BASIC · GRA

HANDLING WOOD AND TIMBER

SWINGING INSTALLATION

- Simple design to minimize weight.
- Ideal for those who want a simple tool to efficiently move logs.
- Top attachment to connect directly to the paired hydraulic rotator.
- Bronze bushings for long life (in Basic models, bushings are ptfe).

- Blades made of high-elastic S700 to reduce weight without reducing strength (in Basic models they are S355J0).
- Lightweight design to allow mounting on both cranes and excavators.
- Central cylinder to have even force distribution on the grapple



EXCAVATORS	TON	1-2			2-4		4-6		1-2		2-5		5-6		6-7		7-9		9-12		12-15		15-18
		MODEL	BASIC 105	BASIC 130	BASIC 150	GRA-L 16	GRA-L 19	GRA-L 22	GRA-R 22	GRA-M 26	GRA-R 26	GRA-M 30	GRA-M 36	GRA-R 36	GRA-M 42	GRA-R 42	GRA-M 52						
FINGERS		CLOSED	CLOSED	CLOSED	CLOSED	CLOSED	CLOSED	OPEN	CLOSED	OPEN	CLOSED	CLOSED	OPEN	CLOSED	OPEN	CLOSED							
WEIGHT	kg	72	101	156	52	92	109	121	195	215	200	295	320	328	350	370							
AREA	m ²	0,16	0,24	0,30	0,16	0,19	0,22	0,22	0,26	0,26	0,30	0,36	0,36	0,42	0,42	0,52							
MAX LOAD	kg	1000	2000	2650	1000	1800	2500	2500	3000	3000	4000	5000	5000	5000	5000	7000							
A	mm	1035	1285	1505	1100	1300	1400	1400	1550	1550	1700	1870	1870	2060	2060	2110							
B	mm	310	355	385	262	326	326	326	450	450	450	520	520	520	520	520							
H1	mm	650	728	865	582	625	648	648	760	760	805	820	820	880	880	900							
H2	mm	495	570	650	385	444	498	498	540	540	525	585	585	665	665	680							
D - MINIMUM GRIP DIAMETER	mm	75	100	100	57	77	118	118	100	100	70	145	145	170	170	160							
OPEN/CLOSE CYLINDER	CLAMPING FORCE	daN	900	1100	1650	775	1060	1275	1275	1640	1640	1450	2110	2110	2405	2235							
	MAX PRESSURE	bar	250	250	250	250	250	250	250	250	250	250	250	250	250	250							
	MAX FLOW RATE	lt/min	50	50	50	50	50	50	50	50	50	50	50	50	50	50							

OPTIONAL

HYDRAULIC ROTATOR

MODEL		3 TON	3 TON	5 TON	3 TON	5 TON	5 TON	5 TON	6 TON	6 TON	10 TON	10 TON	10 TON	16 TON	16 TON	16 TON
MAX PRESSURE	bar	250	250	250	250	250	250	250	250	250	250	250	250	250	250	250
MAX FLOW RATE	lt/min	20	20	20	20	20	20	20	25	25	25	25	25	35	35	35

HYDRAULIC ROTATOR + DOUBLE SWINGING LINK

